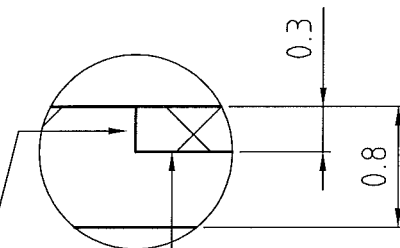


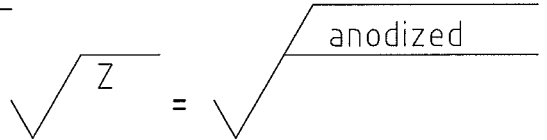
X 20:1


anodized aluminium foil  
thickness of the activated  
anodized layer: approx.  
5µm thick



glued with  
epoxy

surface black  
anodized



various nuclides				DIN ISO 2768 X m X		Surface	Scale 2:1	aluminium	
				Date	Name	<b>ALPHA BETA REFERENCE SOURCE</b>			
				Drawn 08.06.2010	DStapper				
				Appr.	<i>[Signature]</i>				
				 <b>Eckert &amp; Ziegler</b>		<b>VZ-1688-001</b>		Page 1	
				Nuclitec				1 pag.	
E	firm logo	08.06.2010	DST	EDV No.	\exchange\Zeichnungen\1501-1750\VerkaufsZeichnung\VZ1688A.dwg				
Issue	Change	Date	Name						

The contents of this drawing and its enclosures are our property. The drawing and its enclosures may not be duplicated without our written approval nor be made accessible to any third party. Any unauthorised usage is unlawful and will be prosecuted. Copyright reserved.